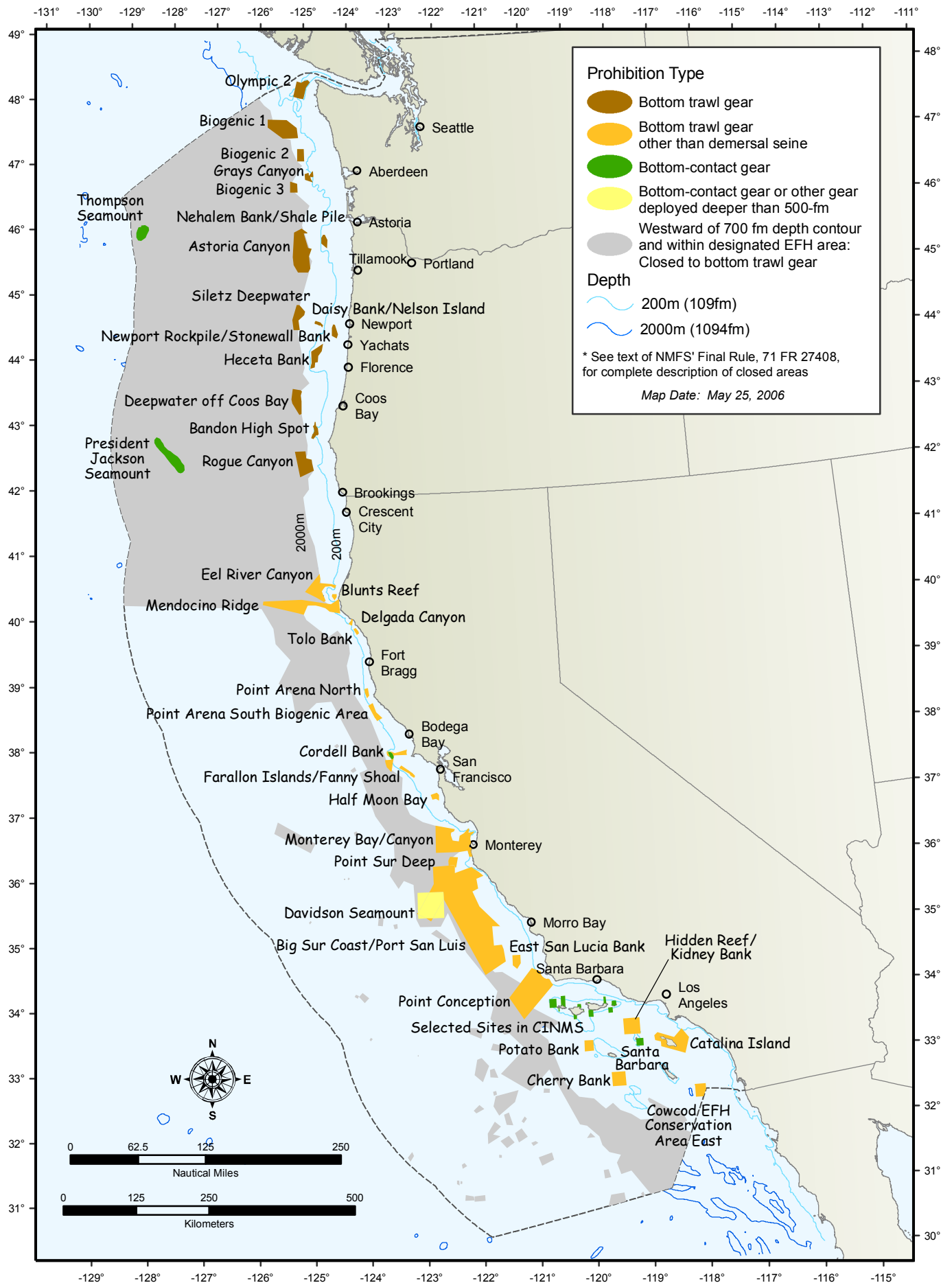


EFH Conservation Area Maps, including: Coast wide map and detailed maps for areas off the coast of Washington, Oregon, North California, Central California, and Southern California.

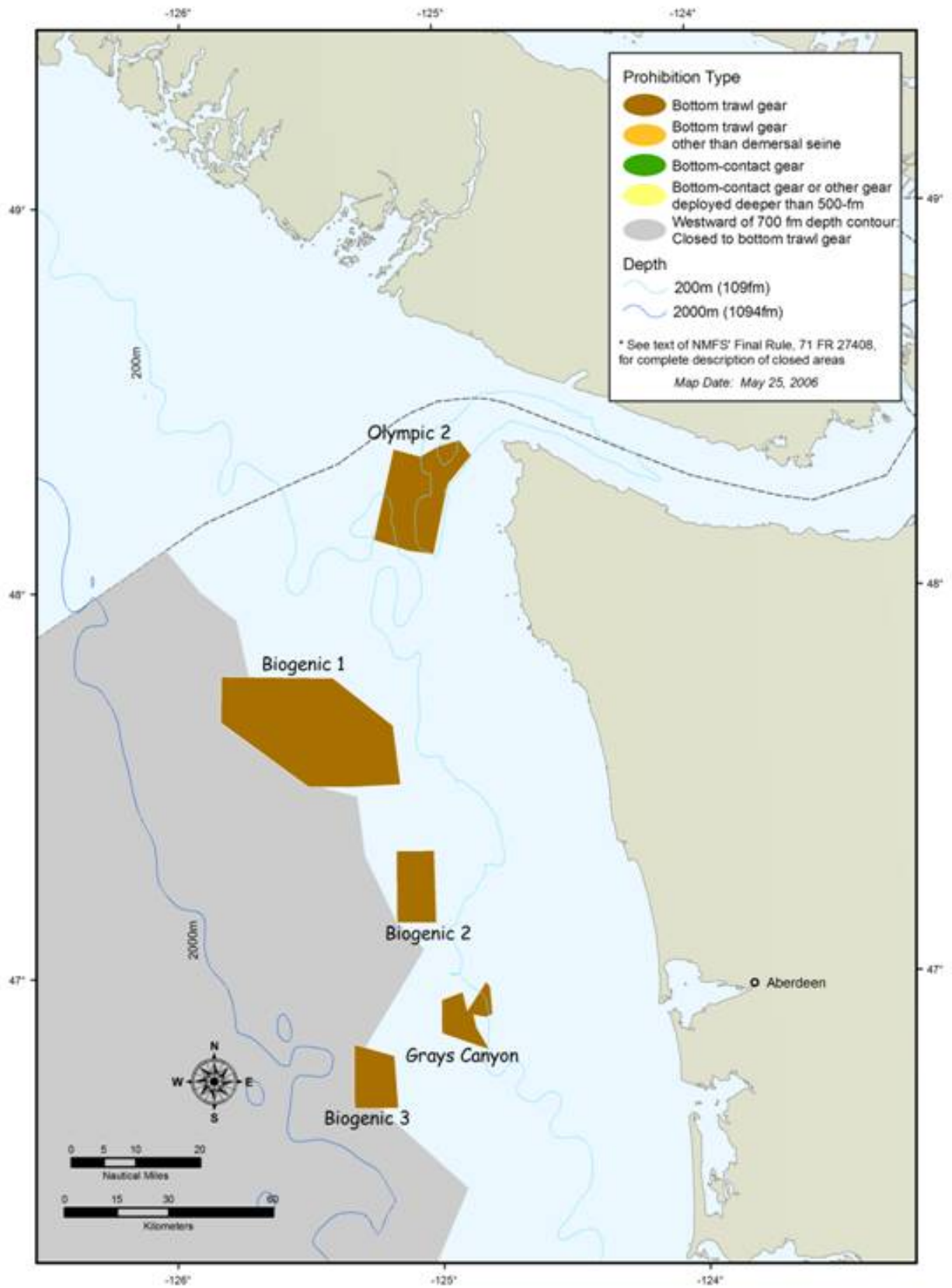
EFH protection measures will implement discrete area closures for specific gear types, effective June 12, 2006. These closed areas were identified by the Pacific Fishery Management Council and are intended to minimize to the extent practicable the adverse effects of fishing on groundfish EFH. Three types of areas are described in this section: EFH, HAPC, and EFH Conservation Areas. Only EFH Conservation Areas are closed to specific types of fishing.

Note: The following maps originate from the Groundfish Closed Areas webpage of NOAA's NMFS Northwest Regional Office. Follow the link below for additional information including coordinates and GIS data:

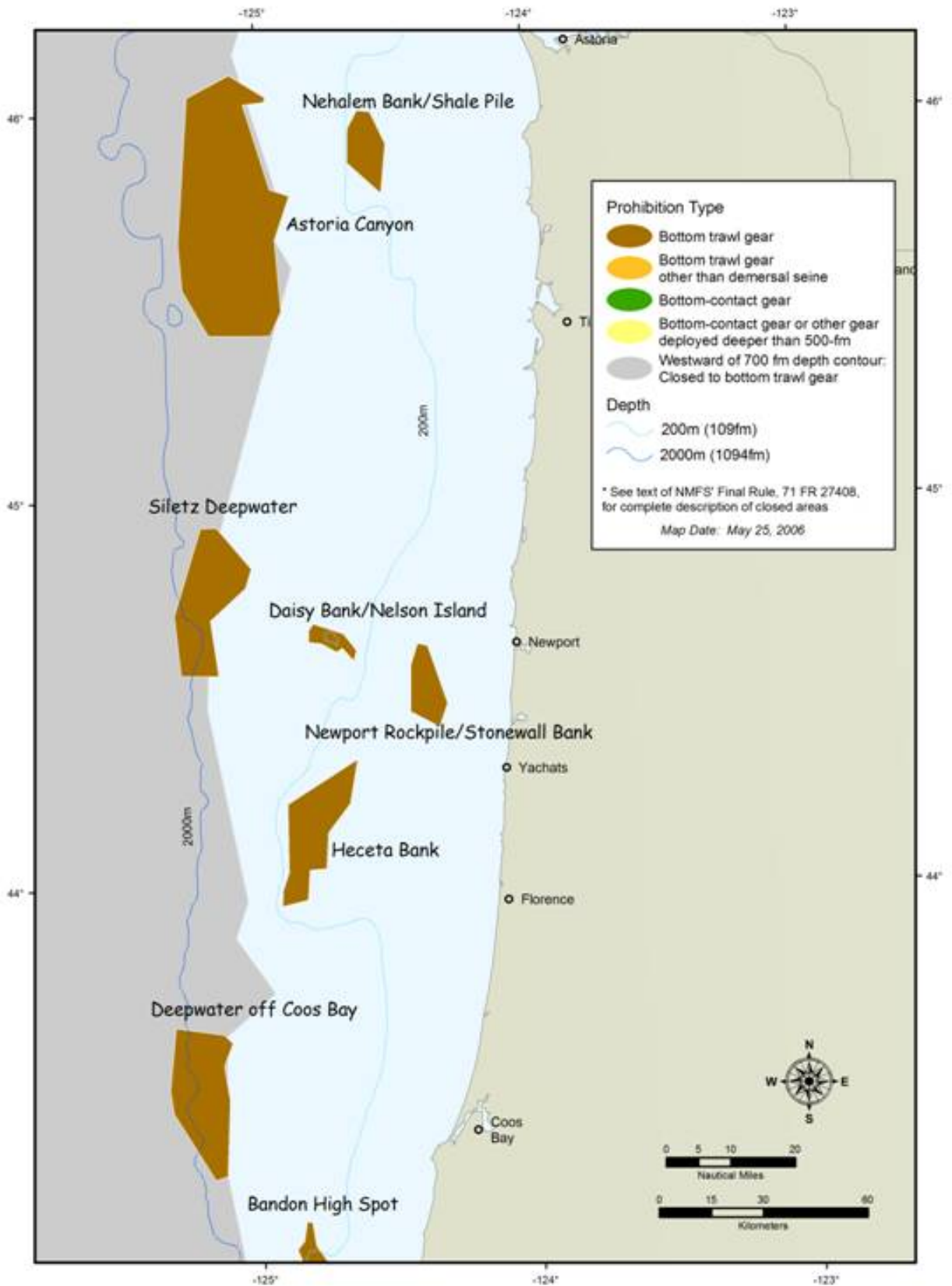
<http://www.nwr.noaa.gov/Groundfish-Halibut/Groundfish-Fishery-Management/Groundfish-Closed-Areas/Index.cfm>



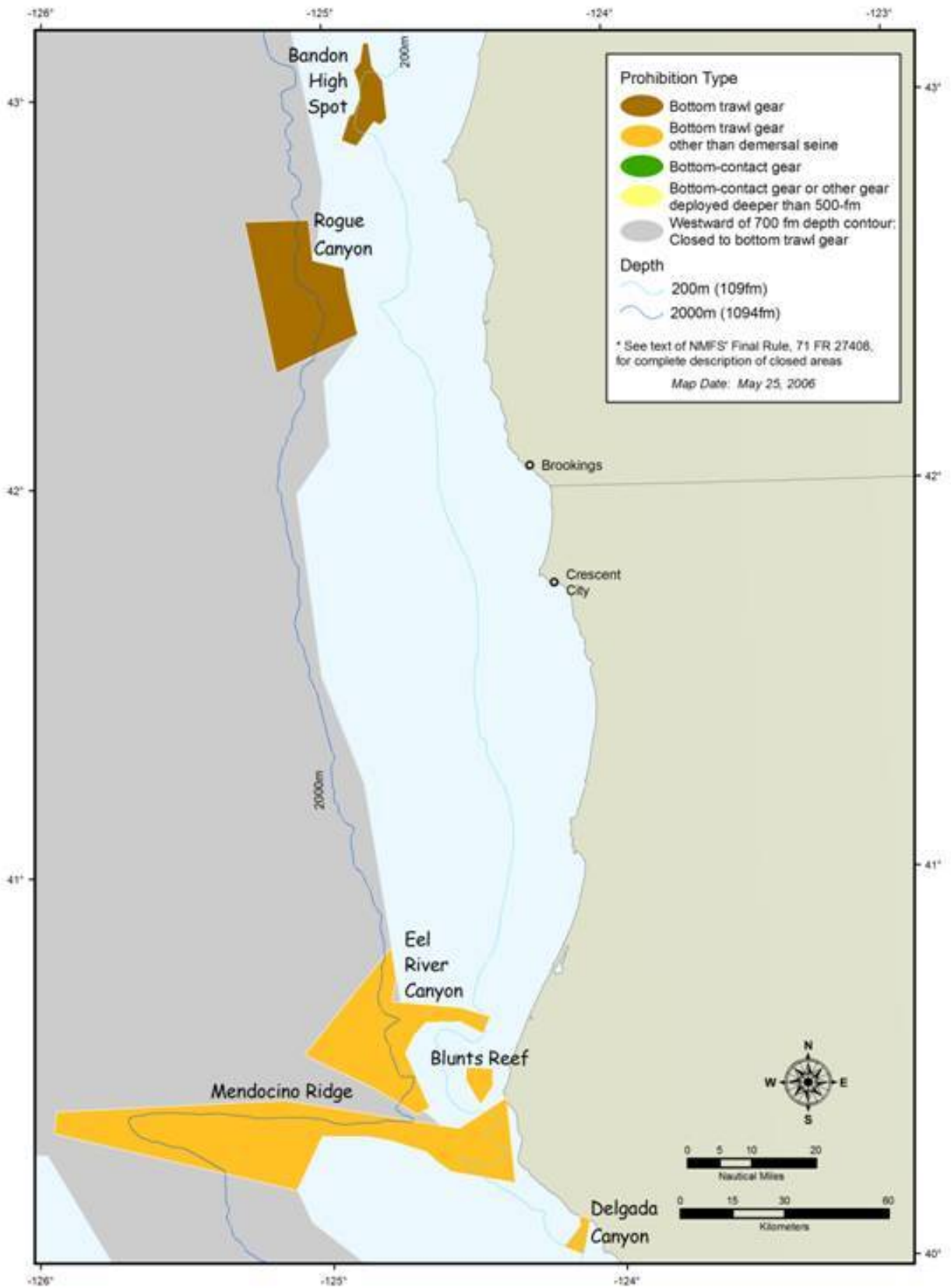
EFH area closures to protect Pacific Coast groundfish habitat - Coastwide.



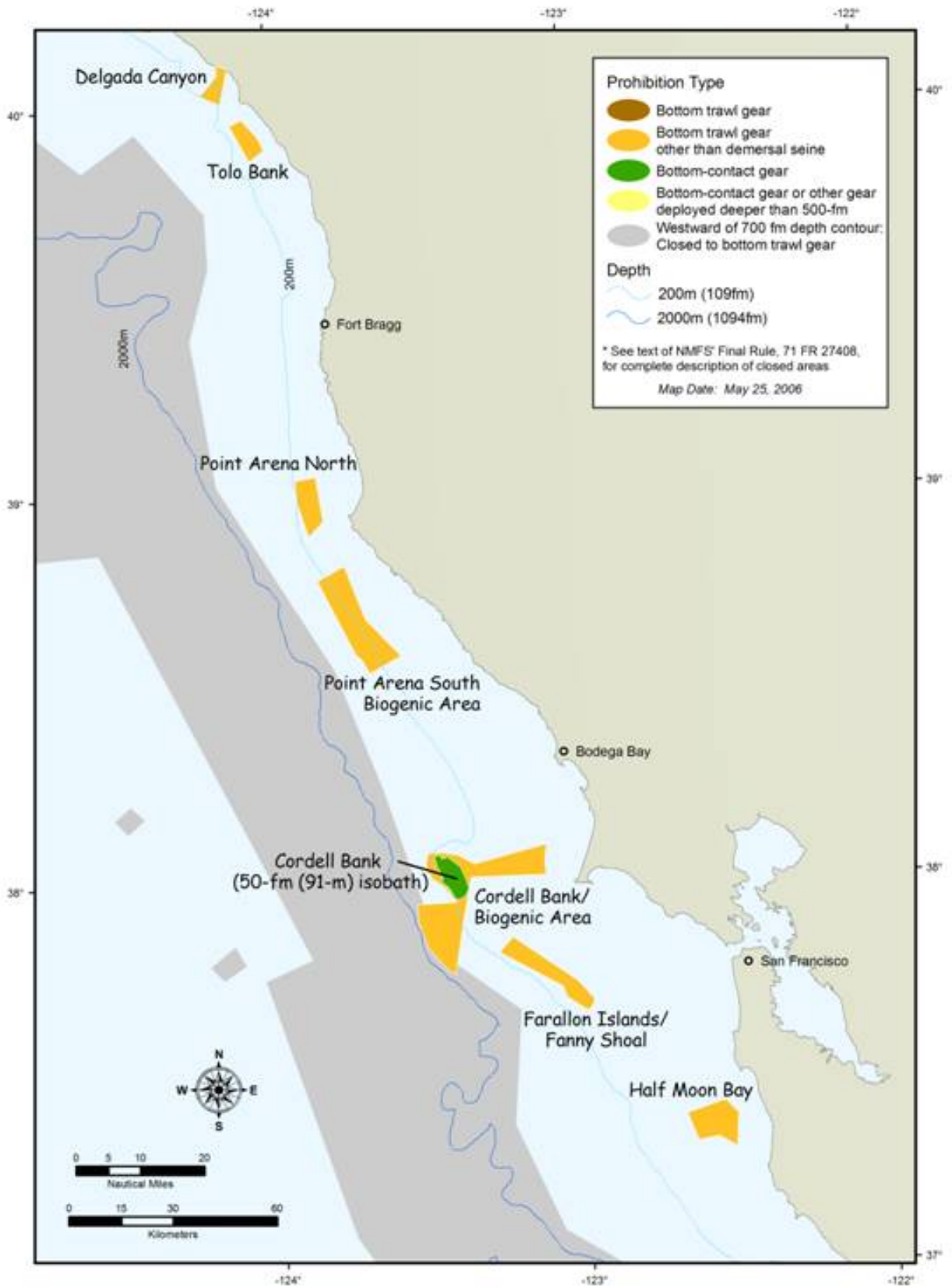
EFH area closures to protect Pacific Coast groundfish habitat - Washington.



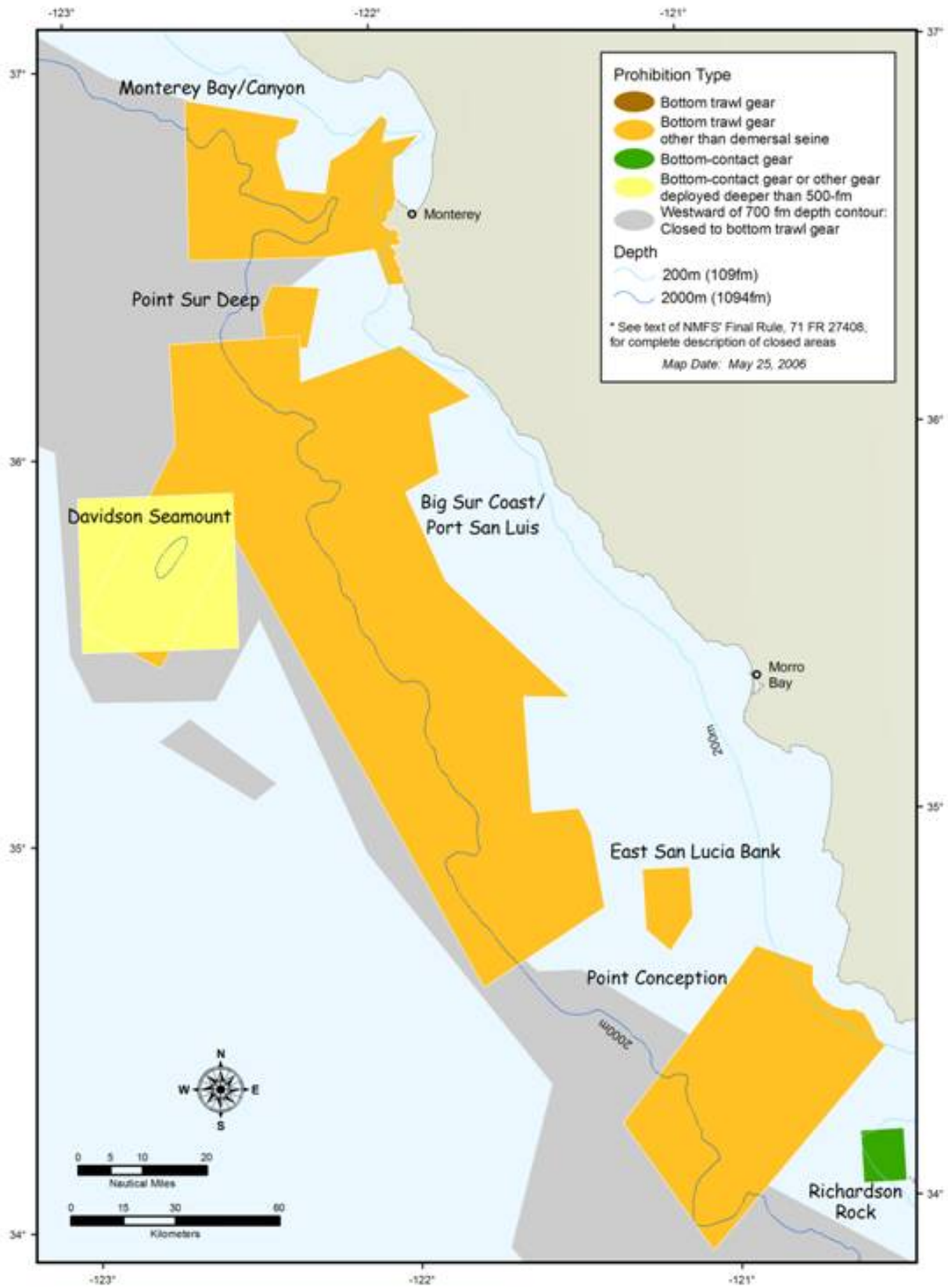
EFH area closures to protect Pacific Coast groundfish habitat - Oregon.



EFH area closures to protect Pacific Coast groundfish habitat – Oregon and Northern California.



EFH area closures to protect Pacific Coast groundfish habitat – Northern California.



EFH area closures to protect Pacific Coast groundfish habitat – Central California.

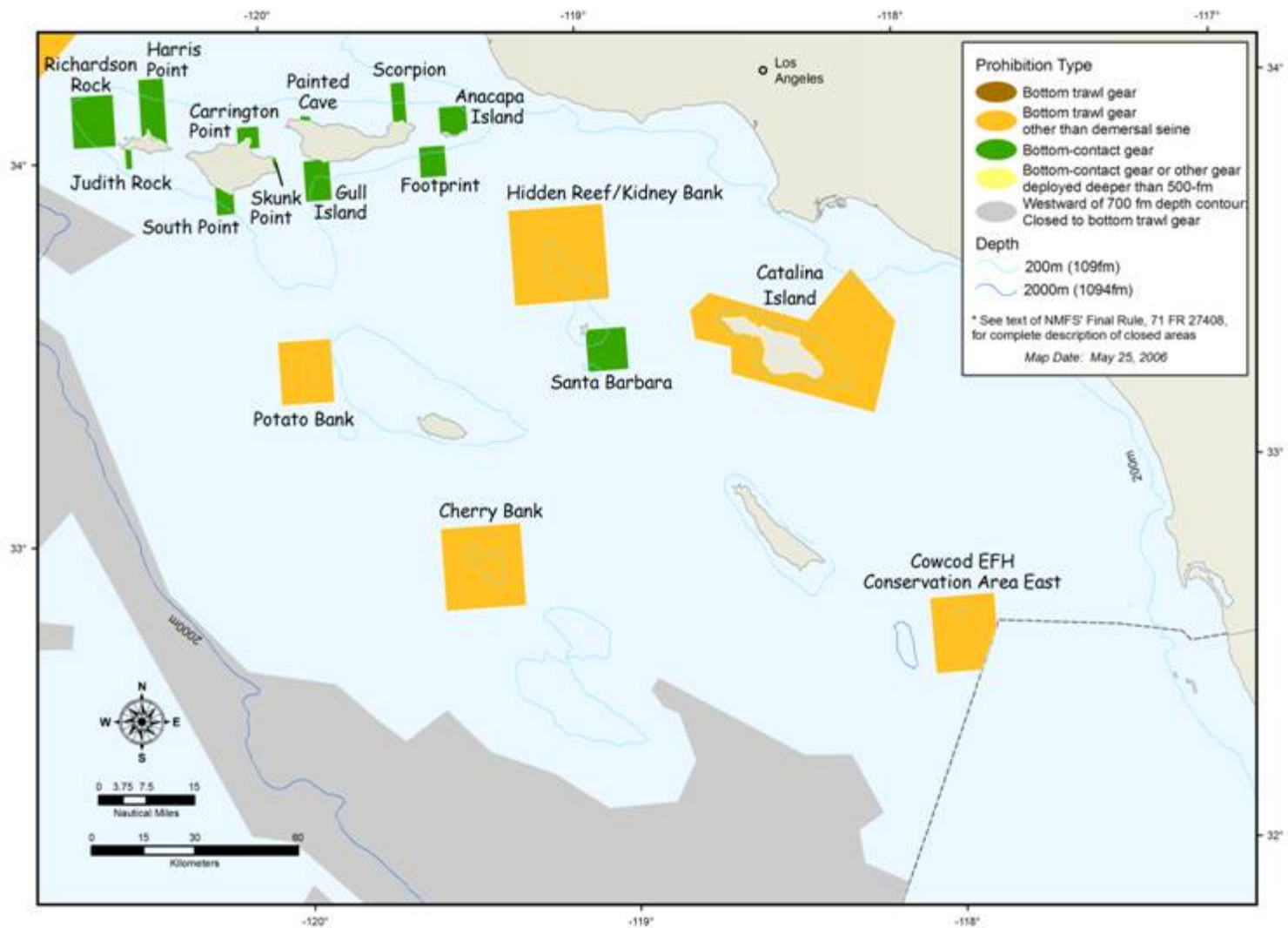


Figure 1 - EFH area closures to protect Pacific Coast groundfish habitat – Southern California